

RENT NOW

El Paso, TX - September 2017 - Vol.9 No.9 **FREE!**



AUTUMN MANOR

See page 62

Colima



*You should
enjoy the
fruits of
your labor.*

*Comfort
Character
Convenience*

**SEE AD PAGES 10-11
HAVE A SAFE
LABOR DAY
WEEKEND**



Rent Now

July - Sept 2017

Volume 9 Number 7-9

President and Publisher

Matt Pepe

Production Coordinator

Trish Espinoza

El Paso, Texas

Rent Now LLC

PO Box 971907

El Paso, TX 79997

mpepe@elpasorentnow.com

Member of El Paso Apartment Association

Rent Now is published monthly. All rights reserved by Rent Now, LLC, a Texas limited liability company El Paso, Texas. No part of this magazine may be reproduced without the express written consent of Rent Now LLC. The Publisher accepts no responsibility for errors in omissions or content. **ALL TERMS AND CONDITIONS OF RENTALS ARE SUBJECT TO CHANGE, HOURS ARE SUBJECT TO CHANGE, AND ANY ADVERTISING SPECIALS MAY BE DISCONTINUED WITHOUT NOTICE.**

All real estate advertised herein is subject to the Federal Fair Housing Act, which makes it "illegal to advertise any preference, limitation or discrimination based on race, color, religion, sex, handicap, familial status, or national origin, or intention to make any such preferences, limitation or discrimination." We will not knowingly accept any advertising for real estate that is in violation of the law.

All persons are hereby informed that all dwellings advertised are available on an equal opportunity basis.



3

featured communities



Bella Estancias

See Page 64 For Information



La Hacienda

See Page 44 For Information



Autumn Manor

See Page 62 For Information




Visit us at:
elpasorentnow.com

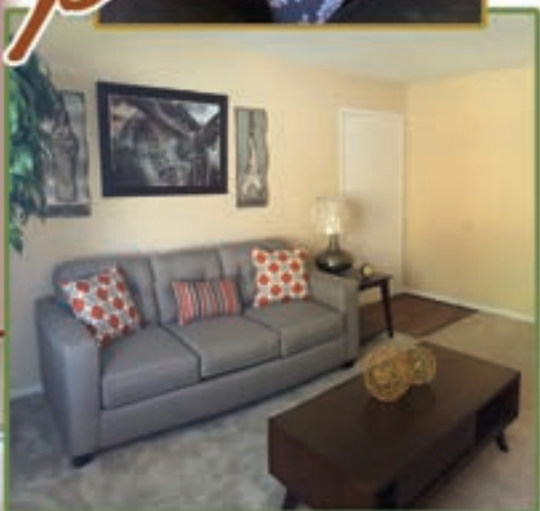
Rent Now Fingertip Rental Guide

Community	Page	Studios (\$) and Bedrooms	Refrigerated Air	EZ Utility Plan	Swimming Pool	Pets	Washer/Dryer	Patio/Balcony	Internet	Laundry Facility	Fitness Center	Clubhouse	Covered Parking	Storage	W/D Connect	Garages	Private backyards/patios
EAST																	
Ashton Parke	7	1,2			x	x		x	x	x				x	x		
Celina Plaza	10	S,1,2,3	x		x	x		x		x					x		
The Citadel	12	1,2,3	x		x	x		x		x	x	x					
Desert Tree	14	S, 1	x		x	x				x	x		x	x			
Dos Santos	16	1,2			x	x				x	x						
La Estancia	18	S,1,2			x	x		x		x	x	x	x		x	x	
La Plaza	20	1,2	x		x	x		x		x	x	x	x				x
Las Gardenias	22	2			x	x				x				x			
San Marin	24	1,2			x	x	x			x		x		x	x		
San Mateo	26	S,1,2,3	x		x			x		x		x	x				
San Miguel	28	1,2	x		x	x		x		x		x		x			
Sand Pebble	30	1,2		x	x	x		x		x				x			x
Santa Cruz	8	S,2	x		x	x		x		x		x		x			x
Summerstone	32	2,3	x		x	x		x	x			x	x	x	x	x	
The Masters	34	1,2	x		x	x				x	x	x	x	x			
The Quest	36	1,2	x		x	x	x	x			x	x					
Trevino Place	9	1,2,3			x	x		x						x	x		
Valley Ridge	38	1,2	x		x	x				x							
Vista Village	40	S,1,2			x	x				x	x	x					x
SAN ELIZARIO																	
La Hacienda at Villa Victoria	44	1,2	x		x	x				x		x	x		x		
LOWER VALLEY																	
Lakeside	45	2, L								x				x			
The Meadows	56	1,2		x	x			x		x				x			
Padres Village	46	2,3	*			x				x				x	*		
San Marcos	50	1,2		x	x	x		x			x						
San Montego	52	1,2		x	x	x		x									
San Pedro	47	1,2		x	x	x											
Southview	54	1,2				x				x							
Valley Place	48	1,2,3						x		x				x			
Villas Del Valle	49	2				x		x									

Prices Subject to Change without Notice 4

Community	Page	Studios (\$) and Bedrooms	Refrigerated Air EZ Utility Plan	Swimming Pool	Pets	Washer/Dryer	Patio/Balcony	Internet	Laundry Facility	Fitness Center	Clubhouse	Covered Parking	Storage	W/D Connect	Garages	Private backyards/patios
NORTHEAST																
3334 Z Place	58	1,2,3	x		x			x	x							
Athens Gate	60	1,2			x	x			x				x			
Autumn Manor	62	1,2			x	x			x				x			
Bella Estancias	64	1,2,3	x		x	x	x	x	x	x	x	x	x		x	
High Vista	66	1,2,3	x		x	x	x	x	x	x	x	x		x		
La Mirada	68	1,2,3,4		x		x			x		x					
Pine Village	70	1,2,3				x			x				x			
The Reserve @ Sandstone Ranch	72	1,2,3	x		x	x	x	x	x	x	x	x			x	
The Trails @ Rancho Vista	74	1,2,3	x	x	x	x			x	x	x					
UTEP AND MEDICAL CENTER																
Sedona Peak	76	1,2		x	x	x			x				x			
Tres Vistas	78	1,2				x		x	x							
MONTECILLO COMMUNITIES																
Santi Dwellings	80	1,2	x		x	x	x				x	x				x
The Venue	82	1,2	x		x	x	x	x	x	x	x					
The View	84	1,2	x		x	x	x	x	x	x	x	x	x			
WEST																
Coronado Villas	86	2,3	x		x	x	x	x	x	x		x	x	x	x	x
Casa Barranca	90	1,2,3		x	x	x		x		x		x				
Colores Del Sol	92	1,2,3	x		x	x		x		x						
Copper Commons	94	1,2,3	x	x	x	x		x	x	x	x					
Foxglove	87	1,2			x	x		x	x	x		x				
Park Ridge	96	1,2,3		x	x	x		x		x	x					
Pine Valley Estates	88	1,2			x	x	x	x						x		
Santa Fe Place	98	1,2			x	x		x	x	x			x			
Seville West	100	1,2,3	*		x	x		*	x			x	x			
The Hills @ N. Mesa	102	1,2,3	x		x	x		x	x				x			
Vista Ventana	89	1,2	x		x	x		x		x						

*Your home should be every
bit as inviting as the
community in which it sits.*



*Come Home to
Santa Fe Place*

See Page 98 for more information

East

NO APPLICATION FEE!

Ashton PARKE

866.384.3887

5815 Timberwolf • El Paso, TX 79903

www.ashtonparkeapts.com

ashtonparke@integrityamc.com

**Washer /
Dryer
Connections**

Driving Directions:

Take I-10 and exit Geronimo. Turn left of Montana then right on Magruder. At the stop sign turn left on Timberwolf. We are on the right by the Jeb Stewart Gate to Ft. Bliss.

Pricing starting at \$650

1BR/1BA 620sq.ft.

2BR/2BA 825sq.ft.



Office Hours

Monday - Friday

10:00 a.m. to 6:00 p.m.

Saturday and Sunday - Closed

- Walking Distance to Ft. Bliss, Bassett Place Mall, Movie Theater and Restaurants
- Stackable Washer/Dryer Connections*
- Gas Heating
- Sparkling Pool
- Fireplaces Upstairs & Downstairs
- Clothes Care Center
- Ceiling Fans Available
- 24-Hour Maintenance
- Pets Welcomed and Loved
- Low Cost Cable Package
- Easy Ft. Bliss access - Jeb Stewart Gate
- Spacious Walk-In Closets
- Sun Metro Bus Route
- Onsite Storage Unit Rental

* In select units



1BR/1BA



2BR/2BA



East Just Minutes from Ft. Bliss!



**REFRIGERATED AIR
GAS HEATING**



8



855.982.1128

10637 Edgemere • El Paso, TX 79925

www.santacruzapartmenthomes.com
santacruz@integrityamc.com

- Pets* WELCOME - No weight restrictions *Breed Restrictions apply
- Sun Metro Bus Stops off Edgemere
- Refrigerated Air Conditioning
- Cable/Trash Package
- Allocated Water/Gas
- Large Bay Windows
- Custom Accent Walls
- Spacious counter tops in Kitchen
- Full size appliances in Studio Floor Plans
- One level - 2 bedroom apartments
- Multi-level Townhouses w/ ample storage spaces
- 6' Outdoor Swimming Pool
- Large Furnished Clubhouse
- Onsite Laundry Center with Front Loaders

Prices Starting at \$515

Studios	530sq.ft.
2BR/1BA	778sq.ft.
2BR/1.5BA	930sq.ft.

Driving Directions

Take I-10, exit off on Yarbrough. Go north about 3 miles, turn left on Edgemere.



Office Hours

Monday - Friday 10:00 a.m. to 6:00 p.m.
Saturday and Sunday - Closed

East AWESOME RATES

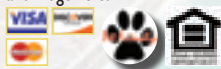
**Gift Card
at Touring!**

- Utility Package
- Low Cost Cable Package
- Emergency 24-Hour Maintenance
- Frost-Free Refrigerator
- Beautifully Renovated
- Dishwasher Included
- W/D Connections // Rentals
- Playground
- Spacious Closets
- Se Habla Español
- Sparkling Swimming Pool

Prices Starting at \$625

1BR/1BA 640sq.ft.
2BR/1BA 840sq.ft.
3BR/2BA 1170sq.ft.

Driving Directions: Take I-10 to Lee Trevino and turn north. Drive approx. 3 miles to Edgemere. We're at the corner of Lee Trevino and Edgemere.



Office Hours

Monday - Friday 10:00 a.m. to 6:00 p.m.
Saturday Call for Hours
Sunday Closed

Trevino Place

855.982.1035

10891 Edgemere • El Paso, TX 79935

www.trevinoplace.com

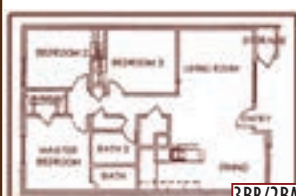
trevinoplace@integrityamc.com



1BR/1BA



2BR/1BA



3BR/2BA

East

*Beautifully
Landscaped Community
within minutes to
anything and everything.*



**COMING
SOON:**

LOCATION! LOCATION! LOCATION!

Move
In
Today

Celina
866.823.1850

8500 Viscount • El Paso, TX 79925

www.celinaplaza.com

celinaplaza@integrityamc.com

- **REFRIGERATED AIR**
- Washer/Dryer Connections (in select units)
- Three Glistening Pools
- Three Convenient Laundry Rooms
- Patios/Balconies (most units)
- Spacious Bedrooms
- Spacious Closets Throughout
- Natural Lit Homes
- BBQ Grills
- Superior and Professional Customer Service
- 7 different floor plans

Prices Starting At \$555**

Studio	520 sq.ft.
1BR/1BA	678 sq.ft.
1BR/1BA w/Loft	736 sq.ft.
2BR/2BA	965 sq.ft.
2BR/2BA	995 sq.ft.
2BR/2BA	1215 sq.ft.
3BR/2BA	1105 sq.ft.
3BR/2BA	1275 sq.ft.

**Prices Subject to Change

Driving Directions: Take I-10 to Hawkins. Proceed north on Hawkins to Viscount. Turn left on Viscount and left again at our entrance. Above Cielo Vista Mall.



Office Hours

Monday - Friday 10:00 a.m. to 6:30 p.m.

Saturday 10:00 a.m. - 6:00 p.m.

Sunday Closed

**NEWLY REMODELED
CLUBHOUSE
AND FITNESS
CENTER!**

East



Refrigerated Air

More than the ordinary...
we are extraordinary
Come see why



**Only Heated Indoor Pool in
Apartment Living in El Paso**

CITADEL
APARTMENTS

855.982.1055

9455 Viscount • El Paso, TX 79925

www.citadelapts.com

thecitadel@integrityamc.com

- Reserved Parking Included
- Refrigerated Air
- Six Laundry Rooms
- Se Habla Español
- Picnic Areas with Grills
- Patio/Balcony w/ Outside Storage
- Resident Social Activities
- Cozy Fireplaces Available
- Emergency 24-Hour Maintenance
- Cable Included
- Pets Welcomed
- HUGE Floor plans
- Friendly Staff
- Award Winning Maintenance
- Affordable Living

Prices Start at \$565

Studio	500 sq ft
1x1	620 sq ft and up
2x1	1,001 sq ft and up
2x1.5	1,069 sq ft and up
2x1.75	1,101 sq ft and up

Driving Directions

From I-10 exit Viscount. Proceed North on Viscount. We are on the right, just past the Acer intersection.



Office Hours

Monday - Friday 10:00 a.m. to 6:30 p.m.

Saturday 10:00 a.m. - 6:00 p.m.

Sunday: Call for Hours

East

DESERT TREE

APARTMENT HOMES

855.507.1114

9300 Montana • El Paso, TX 79925

www.deserttreeapts.com

deserttree@integrityamc.com

- Cyber Café
- **State of the Art Fitness Center**
- Convenient location to Ft. Bliss
- Intrusion Alarms Available
- Vaulted Ceilings and Skylights Available
- Covered Parking Available
- Storage Available
- Huge Walk-In Closets
- Resort Style Atmosphere
- Lighted Tennis Court
- Sand Volleyball
- **Two Full Lighted Basketball Courts**
- Jogging Trail
- **Comfortable Clothes Care Center with FREE WIFI in the lobby open 24 hours**
- Picnic Areas with Grills
- Salt water Pool and Jacuzzi
- Jogging Trail with Exercise Stations
- Covered Outdoor Pavilion
- Basic Cable Included

Prices starting at \$520

Studios and One Bedrooms

Driving Directions

Drive east to Montana past the Hawkins intersection. Proceed to the 9300 block and we are on your right. From I-10 exit McRae, drive north to Montana and turn left. We are on the left.



Office Hours

Monday - Friday 10:00 a.m. to 6:30 p.m.

Saturday 10:00 a.m. - 6:00 p.m.

Sunday Call for Hours

"Express" Resident Care



Where the grass is always greener..



**Refrigerated
Air**



**RESORT
STYLE
ATMOSPHERE**

East

**Call
For
Specials**



***Pet
Friendly***

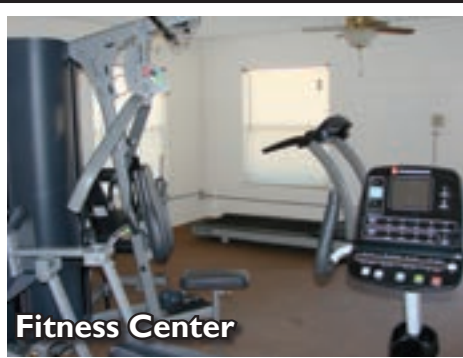
The lifestyle you're looking for...



Two Swimming Pools



Two Playgrounds



Fitness Center



844.475.5230

3541 Peerless Place • El Paso, TX 79925

www.dossantosapts.com

dossantos@integrityamc.com

- Minutes from Ft. Bliss
- Two Pools
- Two Playgrounds
- Gas Heating
- Spacious Apartments
- Dishwasher
- Frost-Free Refrigerators
- Range w/Self-Cleaning Oven
- 2 State-of-the-Art Laundry Facilities
- Emergency 24-Hour Maintenance
- Sun Metro Bus Route
- Se Habla Español
- Ceiling Fans
- Picnic Area at Playground

Pricing starts at \$563

One and Two bedrooms floorplans available.

Driving Directions

From I-10, exit Yarbrough and proceed north. Just before you reach Montana, turn left on Shannon Place and right onto Peerless Place. We are on the left.



Office Hours

Monday - Friday 10:00 a.m. to 6:30 p.m.

Saturday 10:00 a.m. - 6:00 p.m.

Sunday Call for Hours

East



NEW Fitness Center

- Covered Parking Available
 - Controlled Access Gates
 - 3 Sparkling Pools
 - Large Balconies
 - Playground
 - Central Air Conditioning
 - Clubhouse
 - Dishwashers
 - Washer/Dryer Connections*
 - Disposal
 - Walk-In Closets
 - 4 Laundry Facilities
 - Emergency 24-Hour Maintenance
- * in designated units

Prices Start at \$565

Studios

1BR/1BA	705sq.ft.
2BR/2BA	986sq.ft.
2BR/1.5BA	1123sq.ft.

Driving Directions

From I-10 take the Airway exit. Proceed north on Airway and turn right onto Viscount. Travel about 1/2 mile and we are on your right.



Office Hours

Monday - Friday 10:00 a.m. to 6:30 p.m.
Saturday 10:00 a.m. - 6:00 p.m.
Sunday 1:00 p.m. to 6:00 p.m.

Picnic/Grill Areas

**Ask
about
Utilities
Package**



**La
Estancia**
APARTMENT HOMES

855.516.5455

7900 Viscount • El Paso, TX 79925

www.laestanciaapthomes.com

laestancia@integrityamc.com

EXTRA LARGE FLOORPLANS!

IMAGINE!

Beautifully Landscaped

Dogs Enjoying the Pet Park

Pet Friendly

BRAND NEW
FITNESS
CENTER &
CLUBROOM!

East

La Plaza

844.904.6570

9578 Sims • El Paso, TX 79925

www.laplazaapts.com

laplaza@integrityamc.com

**Largest
floor plans
in the
79925**

Office Hours

Monday - Friday 10:00 a.m. to 6:00 p.m.

Saturday and Sunday - Closed



**Pet
Friendly**

* Breed restrictions apply

**Private
Patios**

\$0 Application / \$0 Admin Fees

- ALL SINGLE LEVEL HOMES
- Huge Floorplans
- Clubhouse
- Doggie Station on Property
- REFRIGERATED AIR
- W/D CONNECTIONS IN SELECT UNITS
- 24-hour Maintenance
- Easy I-10 access
- 4 Laundry Facilities
- Covered Parking Available
- Pantries in Kitchens
- Over-Sized Mirrors
- Large Walk-In Closets
- Patio Backyards
- WOOD FIREPLACES IN DENS

Prices Starting At \$660

1BR/1BA	707sq.ft.
2BR/1BA	986sq.ft.
2BR/1.5BA	1150sq.ft.
2BR/2BA	1325sq.ft.
2BR/2BA	1453sq.ft.

Driving Directions

Exit I-10 at McRae. Proceed north and turn left on Sims. La Plaza will be on your left.



East

Las Gardenias APARTMENT HOMES

855.982.1013

11062 Vista Del Sol • El Paso, TX 79935

LasGardeniasApartments.com

lasgardenias@integrityamc.com

- Gas Stoves
- Sparkling Blue Pool
- Clothes Care Center
- Pet Friendly
- Equipped with Basic Cable
- Vaulted Ceilings
- Outdoor Storage (Patio/Balcony)
- Convenient Location
- Ysleta Independent School District

Pricing starts at \$625 with cable included

2BR/1BA 750sq.ft.

Driving Directions: From I-10 exit Lomaland. Go North on Lomaland and turn right at Vista Del Sol. We will be on the right.

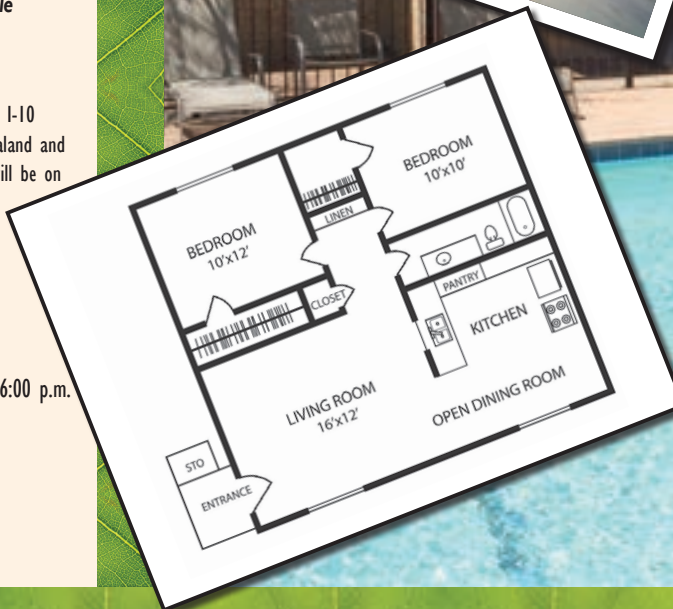


Office Hours

Monday - Friday 10:00 a.m. to 6:00 p.m.

Saturday and Sunday - Closed

**LOW
Electric**



ASK ABOUT OUR SPECIALS



**Reserved
Parking**



**Gas
Stoves**

East



**Washer/
Dryer
connections**

The lifestyle for which you've been searching



SAN MARIN

A PARTMENTS

855-982-1083

1450 George Dieter • El Paso, TX 79936

www.sanmarinapthomes.com

sanmarin@integrityamc.com

- **Electric Full-Size Washer/Dryer Connections**
- **Individual Water Heaters**
- Gas Heater
- Ceiling fans in all rooms
- Evaporative Air Conditioning
- Sparkling Pool
- Extra Storage
- Playground Area
- Clubhouse
- Se Habla Español
- Spacious Dining Area
- Minutes From I-10
- Clothes Care Facility
- Basic Cable included
- 24 hour emergency maintenance

Prices Start at \$605

1BR/1BA 565sq.ft.

2BR/1BA 865sq.ft.

Driving Directions: From I-10 take the Zaragoza Rd. exit. Turn left and proceed north on George Dieter approx. 1/2 mile. We're on the right.



Office Hours

Monday - Friday 10:00 a.m. to 6:30 p.m.

Saturday 10:00 a.m. - 6:00 p.m.

Sunday Closed

Immediate Move-Ins Available

• Refrigerated Air Conditioning

- Fabulous Clubhouse
- Covered Parking
- Breakfast Bar
- Townhomes
- 2 Sparkling Pools
- Covered Parking
- Ceramic Tile Available*
- 24-Hour Maintenance
- Easy I-10 Access
- Breakfast Bar*
- Two 24-hour Laundry Facilities
- Gorgeous Views
- Se Habla Español
- Largest Living rooms on the block
- Pets Welcome
- Wood Burning Fireplaces*

Rates starting at \$53!

The Malibu	Studio	494 sf
The Baja	1 br/1ba	525 sf
The Laguna	1 br/1ba	684 sf
The Ventura	1 br/1 ba	754 sf
The Cabrillo	1 br 1.5 ba TH	878 sf
The Redondo	2 br/1 ba	979 sf
The Newport	2 br/2 ba	1028 sf
The Monterey	2 br/1.5 ba TH	1200 sf
The Carmel	3 br/2 ba	1350 sf

Driving Directions: From I-10, take Viscount/Hunter exit and turn onto Viscount. We are 1/2 mile up on the left.



Office Hours

Monday - Friday 10:00 a.m. to 6:30 p.m.

Saturday 10:00 a.m. - 6:00 p.m.

Sunday Closed

SAN MATEO

855.982.1106

9300 Viscount • El Paso, TX 79925

www.thesanmateoapartments.com

sanmateo@integrityamc.com



9
different
floorplans

REFRIGERATED AIR CONDITIONING

**Largest
Living
Rooms
on Block**

**Great
Place to
Live**



East

*S*AN MIGUEL

Apartments

855.982.1086

10505 Gran Cima • El Paso, TX 79935

www.thesanmiguelapts.com

sanmiguel@integrityamc.com

**LARGE
ONE & TWO
BEDROOM
HOMES**

**Call
For
Huge
Savings**



REFRIGERATED AIR

- Refrigerated Air Conditioning
- Walk-In Closets
- Clothes Care Center
- Frost-Free Refrigerator
- Dishwasher
- Individual Outside Storage
- Ceiling Fans
- Sparkling Swimming Pool
- Clubroom With Fireplace
- Patio/Balcony with personal storage
- Se Habla Español
- Covered Parking

1BR/1BA 675sq.ft.

1BR/1BA 701sq.ft.

2BR/1BA 882sq.ft.

2BR/1BA 932sq.ft.

Driving Directions: From I-10 take Yarbrough exit. Continue north about 2 miles, go through Montwood intersection. Go two blocks and turn right on Ashwood. Proceed straight and turn left on Gran Cima. We are on the left.



Office Hours

Monday - Friday 10:00 a.m. to 6:00 p.m.

Saturday and Sunday - Closed

**Four legged
friends
welcome.**

**Patios and
Balconies**

East

Ask
about
our
GREAT
Specials!



Make your moving experience a great one!!

Sand Pebble
• APARTMENTS •

855.982.1094

11280 Pebble Hills • El Paso, TX 79936

www.SandPebbleApts.com

sandpebble@integrityame.com

- Utility Package Included
- Ceiling Fans
- Walk-In Closets
- Separate Dining Area
- Outside Storage
- Swimming Pool/Play Area
- Patios/Balconies - Every Apartment
- Picnic Areas
- Dishwashers
- Large Laundry Facility
- Frost-Free Refrigerators
- 24-Hour Maintenance
- Sparkling Lap Pool
- Sun Metro Bus Route
- Pets Welcome

Prices Starting At \$565

UTILITIES PAID

1BR/1BA	651sq.ft.
1BR/1BA	675sq.ft.
2BR/1BA	797sq.ft.
2BR/2BA	921sq.ft.

Driving Directions

Take I-10, exit off on Lee Trevino. Go North 3 miles to Pebble Hills Blvd. Turn right (East). Continue on Pebble Hills Blvd. We are on the right, one block before George Dieter.



Office Hours

Monday - Friday 10:00 a.m. to 6:30 p.m.
Saturday 10:00 a.m. - 6:00 p.m.
Sunday Closed

**Utility
Package
Electric,
Gas and
Cable paid**



East



855.982.1134

1411 Bob Hope Dr. • El Paso, TX 79936

www.summerstoneapartmenthomes.com

summerstone@integrityamc.com

- Designer Interiors
- Two-Tone Custom Paint
- Upgraded Carpet
- Maple-Tone Cabinets
- Granite Finish Countertops
- Full-Size W/D Connections
- Internet Cafe
- Refrigerated A/C
- Covered Parking
- Computer Niches
- Single-Car Garages w/ Storage Space Available
- Patios
- Clubroom w/ Pool Table
- Woodburning Fireplace
- Balconies w/Exterior Storage Room
- Refreshing Pool

Pricing starts at \$960

2BR/2BA 920sq.ft.

3BR/2BA 1150sq.ft.

Driving Directions

Take I-10 to Loop 375-Exit Pellicano and turn left. Proceed to lights at Bob Hope and turn right. Summerstone is on the left.



Office Hours

Monday - Friday 10:00 a.m. to 6:00 p.m.

Saturday By Appointment

Sunday Closed

**WASHER
& DRYER
INCLUDED
IN SELECT
UNITS**



Luxury Living in El Paso!

Refrigerated
Air
Washer &
Dryer
Connections



East

Call for Specials



For El Paso's
"warm" summer
days, stay
"cool" with
Refrigerated Air

Look no farther... You are home!!



MASTERS COMMUNITY

844.319.5601

1750 Lee Trevino • El Paso, TX 79936

www.themasterscommunity.com

themasters@integrityamc.com

- REFRIGERATED AIR
- Looking for your next Home Sweet Home?
- NEW STATE-OF-THE-ART FITNESS CENTER
- Wake Up to a Golf Course View
- Plan Your Tee Time in Our Picnic Area
- Sparkling Swimming Pool
- Storage
- Tennis Court
- Volleyball Court
- No Waiting Around to Wash Your Clothes In Our 3 Clothes Care Centers.
- Covered Parking
- Separate Dining Area
- Pantries
- Se Habla Español

Prices Starting At \$595

1BR/1BA	640sq.ft.
2BR/1BA	920sq.ft.
2BR/2BA	940sq.ft.

Driving Directions: From I-10, take the Lee Trevino exit. Proceed 1 1/2 mile north on Lee Trevino and we are on your right.



Office Hours

Monday - Friday 10:00 a.m. to 6:30 p.m.

Saturday 10:00 a.m. - 6:00 p.m.

Sunday 1:00 p.m. - 6:00 p.m.



**TWO
BEDROOM
AVAILABLE**



915-532-3380

NOW LEASING

Washers and dryers in every home

Fitness center

Business center with wifi

Clubroom with latte bar

Resort style pool with hot tub

Controlled access gates

Modern Stainless Steel Appliances

Granite countertops

Pet park

Playground with canopy

One and two bedroom apartment homes
starting at \$835

Hours:

Monday - Friday 10:00 a.m. to 6:00 p.m.

Saturday By Appointment

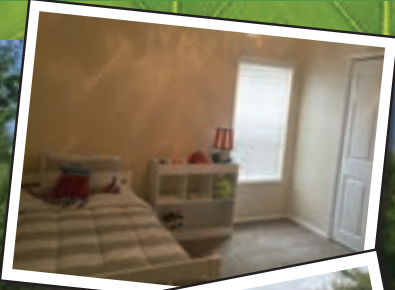
Sunday Closed



11400 Edgemere / thequest@integrityamc.com

East

**2
bedroom
2
bath
Available!**



2 BEDROOM IMMEDIATE MOVE-INS

2 Bedroom/2 Bath
943 Sq. Ft.



1 Bedroom/1 Bath
547 Sq. Ft.



VALLEY RIDGE

APARTMENT HOMES

915.206.3166

1650 George Dieter • El Paso, TX 79936

www.valleyridgeapts.com

valleyridge@integrityamc.com

• **REFRIGERATED AIR**

- Crown Molding
- Gas Heat
- Energy-Efficient Windows
- Sparkling Swimming Pool
- Picnic Area
- Texas-Sized Closets
- Frost-Free Refrigerators
- 24-Hour Maintenance
- 24-Hour Clothing Care Center
- Ceiling Fan in Bedrooms
- Custom Home Accents
- Low Cost Cable Package
- Minutes From Shopping

Multiple Floor Plans Available

Pricing starts at \$535

One bedroom / One bath	547 sf
One bedroom / One bath	758 sf
2 bedroom / 2 bath	943 sf

Driving Directions: From I-10, exit Zaragosa Road. Turn left and proceed north on George Dieter. We'll be on your right just past Vista Del Sol.



Office Hours

Monday - Friday 10:00 a.m. to 6:00 p.m.

Saturday 10:00 a.m. - 6:00 p.m.

Sunday - Closed

East



855.982.1130

10535 Montwood • El Paso, TX 79935

**High
quality
living**



40

Immediate move in for 2x2



www.vistavillageliving.com
vistavillage@integrityamc.com

**Utilities
Included**
Ask for details

- Two Swimming Pools
- Utility Package with Cable
- Sun Metro Bus Route
- Tennis Court
- Ceiling Fans
- Enclosed Private Patio (Townhomes)
- Gas Stove
- 2 Clothes Care Centers
- Exterior Storm Doors
- Dishwasher
- Beautiful Landscaping
- Clubhouse
- BBQ Areas
- Computer lab center
- Fitness center
- Basketball court
- Pet Friendly
- Courtesy Officer

Prices Starting at \$630 (Utilities Included)

Efficiency	418 sq. ft.
1Br/1Ba	570 sq. ft.
1Br/11/2Ba Townhome	675 sq. ft.
2Br/1ba	752 sq. ft.
2Br/2ba	774 sq. ft.
2Br/11/2Ba	841 sq. ft.
2Br/11/2 w/den	1002 sq. ft.

Driving Directions

From I-10 take the Yarbrough exit, proceed north to Montwood. Turn right and proceed three blocks. We're on the left.



Office Hours

Monday - Friday 10:00 a.m. to 6:30 p.m.
Saturday 10:00 a.m. - 6:00 p.m.
Sunday Closed



**NEW WEBSITE
LAUNCHING SOON!**





**MOBILE
FRIENDLY**

Brand New One Bedrooms Available NOW



La Hacienda at
VILLA VICTORIA
APARTMENT HOMES

855.981.9760

13071 Socorro Road • San Elizario, TX 79849

www.VillaVictoriaApartments.com

villavictoria@integrityamc.com



**Amazing
Move-in
Specials**

Las Villas at Villa Victoria
Brand New
One Bedroom Homes
Washer and Dryer Included
starting at \$585

44

FEATURES

- Cyber Café
- Business Center
- Clubroom with Gaming Area
- Washer & Dryer Connections
- Pet Friendly Community
- Playground

AMENITIES

- 1 and 2 bedrooms
- Fully-fenced Community
- Covered Parking Available
- Wood-inspired Floors
- Upgraded Carpet
- Refrigerated Air
- Faux granite countertops
- Maple Cabinets
- Sparkling Pool
- *Linen Closets
- *Separate Coat Closets
- Pass-through Bars
- No Income Restrictions

Prices Starting At \$565

1 BR / 1 BA	709 sq. ft.
2 BR / 1BA	778 sq. ft.
2 BR / 2BA	910 sq. ft.

Driving Directions: Take the Alameda exit off of Avenue of the Americas (Loop 375) and go east 4.6 miles. Turn right at Passmore and continue for 1.2 miles to Socorro Rd. Make a left, travel 2.9 miles and we will be on the left.

Office Hours

Monday - Friday 10:00 a.m. to 6:00 p.m.
Saturday - Call for Appointment
Sunday - Closed



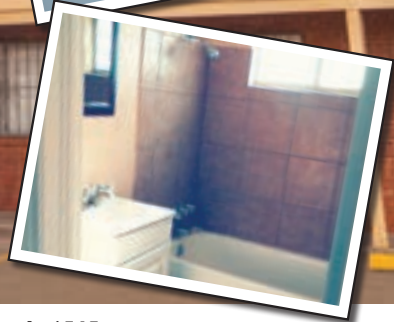
Lower Valley

Lakeside APARTMENTS 855.982.1022

112 S. Little Flower | El Paso, TX 79915

www.thelakesideapartments.com

lakeside@integrityamc.com



- Cable Ready
- Playground
- Portion of Trash and Water Included
- Close to Shopping
- Close to Schools
- Wrought Iron Doors and Windows
- Storages
- Carpet or Laminate Wooden Floors
- Close to International Bridge
- Accessible to All Major Highways
- Ceiling Fans
- Large Windows
- Energy efficient appliances
- Emergency 24 hour maintenance
- 2 Laundry facilities on site

Prices Starting At \$565

2BR	600sq.ft.
2BR	696sq.ft.
2BR	840sq.ft.

Driving Directions

On I-10 exit Paisano. Merge onto Gateway Blvd. East. Slight right onto East Paisano. Slight left to stay on E. Paisano. Slight right onto Alameda. Turn right S. Little Flower. We will be on the left.



Office Hours

Monday - Friday 10:00 a.m. to 6:00 p.m.
Saturday - Call for Hours
Sunday - Closed

Lower Valley

PADRES VILLAGE

855.982.0993

270 Padres Drive • El Paso, TX 79907

www.padresvillage.com

padresvillage@integrityamc.com

Ask about
our specials
and Take
a tour!

- Low Cost Cable Package
- Upgraded Custom Interiors
- Custom Home Accents
- Energy-Efficient Appliances
- Playground
- Laundry Room
- Outside Storage
- BBQ Areas
- Emergency 24-Hour Maintenance
- Se Habla Español

Prices Starting at \$606

Featuring 2 bedroom/1 bath
and 3 bedroom/2 bath apartments

Driving Directions: I-10 to Yarbrough, go south to Alameda; turn left past the high school to Padres. Turn right. We are on the left. From Border Highway take Padres exit, go north. We are just past the stop sign on the right.



Office Hours

Monday - Friday 10:00 a.m. to 6:00 p.m.
Saturday and Sunday Closed

Lower Valley



**GREAT
Place
to Live!**

San Pedro APARTMENT HOMES

855.523.7576

7696 Alameda Ave. • El Paso, TX 79915

www.thesanpedroapts.com

sanpedro@integrityame.com

- Energy Efficient Appliances
- Walk to Sun Metro Bus Stop
- Common Mail Center
- Plenty of Parking
- Pets Welcomed
- Se Habla Español
- Emergency 24-Hour Maintenance
- Swimming Pool
- Cable Included
- Frost Free Refrigerator
- Evaporative Cooling
- Gas Stoves
- Linen Closets
- Ceiling Fans
- W/D Available
- Breakfast Bar

Prices Starting at \$515

1BR/1BA 635 sq. ft.

2BR/1BA 735 sq. ft.

Driving Directions: Take the Border Highway, exit on Midway to Alameda Ave. Take a right one block to McCarthy. Turn right and you will see San Pedro.

From I-10, Exit Yarbrough South. Turn right on N. Carolina. Turn Left on Alameda. Right on McCarthy and you will see San Pedro.



Office Hours

Monday - Friday 10:00 a.m. to 6:00 p.m.

Saturday - Call for Hours

Sunday - Closed

Lower Valley

**HUD
WELCOME**

**RENT
NOW!**

**VALLEY
PLACE**

APARTMENT HOMES

855.519.4975

8210 Carpenter Drivel El Paso, TX 79907

www.valleyplaceapts.com

valleyplace@integrityamc.com

- One, Two & Three Bedroom Apartments
- Step Saver Kitchen
- Serve through Counters
- Evaporative Cooling
- Gas Heating
- Gas Cooking
- Vaulted Ceilings
- Clothes Care Center
- Outside Storage Closet
- Self-Storage Units Available
- Dishwashers
- Garbage Disposals
- Se Habla Español

Pricing starts at \$520

1BR/1BA 570sq.ft.

2BR/1BA 740sq.ft.

2BR/2BA 820sq.ft.

3BR/2BA 1000sq.ft.

Driving Directions: Take Interstate 10 to Yarbrough, proceed south to Alameda. Turn left onto Alameda, passing the second auto parts store on the left. Turn left onto Cinecuc. The office is on your right.

Office Hours

Monday - Friday 10:00 a.m. to 6:00 p.m.

Saturday - Call for Appointment

Sunday - Closed



Lower Valley



Villas del Valle APARTMENTS

855.859.8057

9238 Betel • El Paso, TX 79907

www.villasdelvalleapts.com

sanmontego@integrityamc.com

- Vaulted Ceilings
- Gas Ranges
- Emergency 24 Hour Maintenance
- Outside Storage
- Se Habla Español
- Pet Friendly
- Laundry Facility
On-Site
- Walk-In Closets
- Dishwasher
- Energy-Efficient, Evaporative Cooling

**2 Bedroom, 1 bath pricing
starts at \$580**

Directions to Community

Take I-10, exit Zaragoza. exit turn right on Gateway East and Zaragoza. Turn left on Betel. We're on the right hand side.

Directions to Leasing Office

From I-10, exit Zaragoza south. Turn left on Cashew then make another left on Kernel. We're the first entrance on the left.



Office Hours

Monday - Friday 10 a.m. to 6:30 p.m.

Saturday 10 a.m. to 6 p.m.

Sunday closed

Lower Valley

- Low Cost Cable Package
- 2 Newly Remodeled Clubhouses
- Convenient Shopping
- Two Beautiful Pools
- Pets Welcome
- Close to I-10
- Emergency 24-Hour Maintenance
- Four Laundry Facilities
- HUD Welcome
- Two Playgrounds
- School Bus Stop

Prices Starting at \$553

One bedroom / one bath

Two bedroom / one bath

Basic Cable Included

Driving Directions:

From I-10 exit Zaragosa South. Proceed 3/4 mile. We are on your right.



Office Hours

Monday - Friday 10:00 a.m. to 6:30 p.m.

Saturday 10:00 a.m. - 6:00 p.m.

Sunday Open by Appointment - Call for Hours



**Convenient
Location**

**TWO
PLAYGROUNDS!**



Best Value in the Valley

San Marcos

855.982.1047

921 North Zaragosa Rd. | El Paso, TX
www.thesanmarcosapartments.com 79907



Clubroom

Great
Move In
Specials

Lower Valley



**BEST
VALUE IN
THE
VALLEY**

GREAT CUSTOMER SERVICE



855.982.1092

9133 Kernel Circle • El Paso, TX 79907

www.sanmontegoapts.com

sanmontego@integrityamc.com

- 3 Playgrounds
- Storage Units
- Professional Management
- Fully Fenced Community
- HUD Welcome
- Emergency 24-Hour Maintenance
- Swimming Pool
- Central Gas and Heat
- Large Courtyard Areas
- Walk-In Closets
- Laundry Facility
- Se Habla Espanol

Prices Starting At \$535

1 bedroom/1 bath

2 bedroom/1 bath

Driving Directions

From I-10 exit Zaragoza go south on Zaragoza, left on Geranium Dr. and Right on Kingsweath PL., And right on Kernel first entrance to your left.



Office Hours

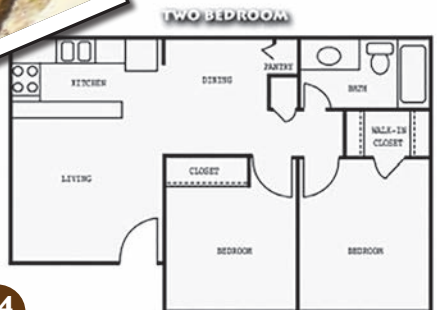
Monday - Friday 10 a.m. to 6:30 p.m.

Saturday 10 a.m. to 6 p.m.

Sunday closed



Lower Valley



Great Customer Service

**FREE
BASIC
CABLE**

SOUTHVIEW *Apartments*

855.982.1118

611 N. Yarbrough • El Paso, TX 79915

www.southviewapthomes.com

southview@integrityamc.com

Location!

Location!

Location!

- Playground Area
- Laundry Facility
- Pantry
- Beautiful wood cabinets
- Electric ranges
- Great location
- Emergency 24 Hour Maintenance
- Energy Efficient Appliances
- Pets Welcomed
- Se Habla Espanol
- Minutes from Shopping
- On Bus Route
- Quick access to I-10 and Loop 375

Prices Starting At \$555

1bd/1ba	483sqft
2bd/1ba	648sqft

Driving Directions

On I-10 Exit 28B Toward Yarbrough Drive.
Merge onto Gateway Blvd. East. Turn right onto
N. Yarbrough Drive. We will be on the right.




Office Hours

Monday - Friday 10:00 a.m. to 6:00 p.m.
Saturday and Sunday - Closed



Lower Valley

**Ask About
Specials on Our
1 & 2 Bedrooms**



**Our community has everything you could want.
Come live the life you deserve at The Meadows.**

Let our Beautiful Surroundings Be Your Park

The Meadows APARTMENTS

855.514.1463

8404 North Loop • El Paso, TX 79907

www.themeadows-apartments.com

themeadows@integrityamc.com

- Playground
- Private Patios/Balconies
- Outside Storage
- Lush Landscaping
- Swimming Pool
- 2 laundry facilities
- 1 & 2 Bedrooms
- High Vaulted Ceilings
- Wood Plank Floors*
- Close to I-10 and Border Highway

Pricing starts at \$590

1BR/1BA

650sq.ft.

1BR/1BA

750sq.ft.

2BR/1BA

850sq.ft.

Driving Directions

From I-10, take the Lee Trevino exit.
Proceed 1 1/2 mile north on Lee Trevino
and we are on your right.



Office Hours

Monday - Friday 10:00 a.m. to 6:00 p.m.

Saturday - Call for Appointment

Sunday - Closed

*in select units

Northeast



**Utilities
Package**
Ask for details

**Specials on
Selected Units**

APARTMENTS AS BIG AS YOUR LIFE STYLE



3334

PLACE

apartment homes

866-743-6119

3334 Zion • El Paso, TX 79904

www.3334zplace.com

zplace@integrityamc.com

- Choice of townhome or single-level floorplans
- Every apartment has an extra bathroom!
- Plenty of Room to Stretch
- You should see the view from here
- Refrigerated Air Conditioning
- 2 Splash-Worthy Pools
- Balconies/Patios
- Fun Playground
- Feel at home in our clothing care centers
- Fire-Cracking Fireplaces*
- Emergency 24-Hour Maintenance

* in select units

Call for Pricing and Details

1 bedrooms	900-966 sq. ft.
2 bedrooms	1008-1200 sq. ft.
3 bedrooms	1186-1500 sq. ft.

Driving Directions

From I-10 take the Patriot Highway to the Fred Wilson exit. Turn left onto Fred Wilson, proceed and turn right on Alabama to Zion. Z Place is 2.5 miles



Office Hours

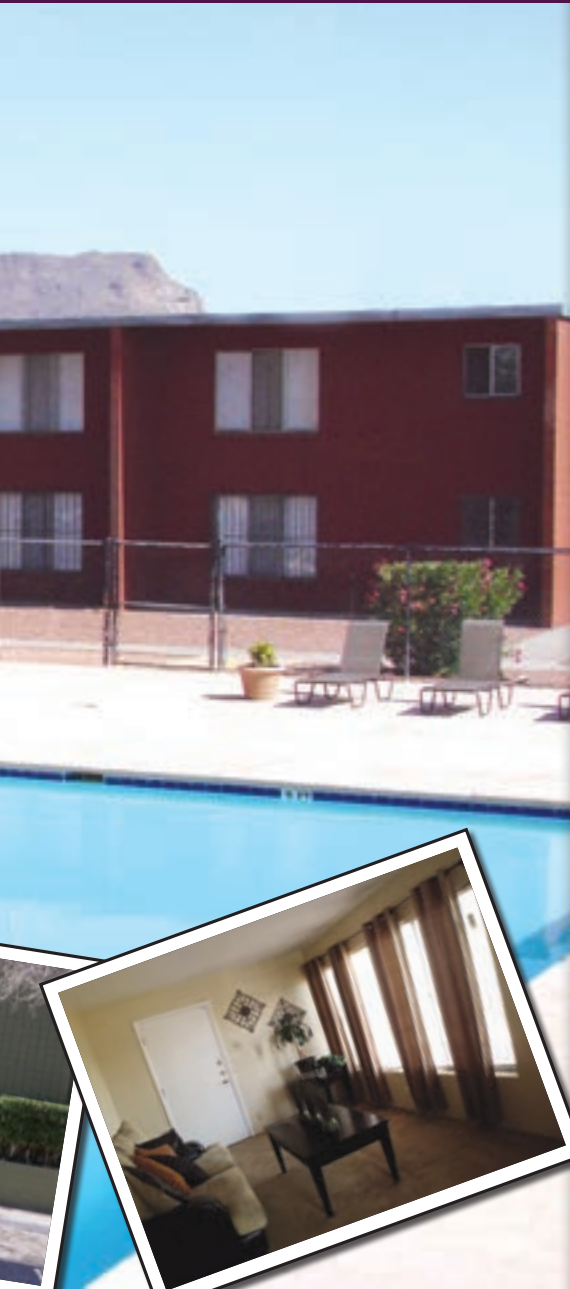
Monday - Friday 10:00 a.m. to 6:30 p.m.
Saturday 10:00 a.m. - 6:00 p.m.
Sunday Closed

Northeast



Pet Friendly

Close to Fort Bliss



ATHENS GATE APARTMENT HOMES

855.714.7402

4554 Hercules • El Paso, TX 79904

www.athensgateapts.com

athensgate@integrityamc.com

- Gas Heating
 - Gas Stove*
 - Wood Inspired Floors*
 - Walk-In Closets
 - Open Aired, Subterranean Pool
 - Kiddie Pool
 - Recreation Zone
 - Beach-Style Volleyball
 - Nature Sheltered Picnic Areas
 - Se Habla Español
 - 24-Hour Emergency Maintenance
 - 4 Garment Treatment Centers
 - Storage Garages Available
 - Playground
 - BBQ Grills
- *In Select Units

Prices start at \$515

1BR/1BA	522 sq.ft.
1BR/1BA	680 sq.ft.
2BR/1BA	689 sq.ft.
2BR/1BA	746 sq.ft.

Driving Directions

Take I-10 to Patriot Freeway, go north and exit on Dyer. Turn right on Hercules and we are on the right.



Office Hours

Monday - Friday 10:00 a.m. to 6:30 p.m.
Saturday 10:00 a.m. - 6:00 p.m.
Sunday Closed

Northeast



**Two
bedrooms
start at \$600
with Limited Availability**

GREAT CUSTOMER SERVICE

Ask
About Our
Amazing
Specials

Resident
Activities



AUTUMN MANOR
APARTMENTS

866.370.7068

9960 McCombs • El Paso, TX 79924

autumnmanor@integrityamc.com

www.autumnmanor-apts.com

- Emergency 24-Hour Maintenance
- Three Newly Remodeled Laundry Centers
- Large Walk-In Closets
- BBQ Areas
- Evaporative Cooling
- Bookshelves
- Storage Units Available
- Playground
- Close to Ft. Bliss
- Sparkling Pool
- Dry Bars

Prices start at \$545 including cable Studios

1br/1 ba 525 sq. ft.

2 br/ 1 ba 676 sq. ft.

Prices subject to change

Driving Directions: Take I-10 to

Patriot Freeway, exit Transmountain. Turn right on Transmountain to McCombs. Turn right on McCombs and we are ahead on the left.



Office Hours

Monday - Friday 10:00 a.m. to 6:30 p.m.

Saturday 10:00 a.m. - 6:00 p.m.

Sunday Closed

Northeast

855.804.1933

10800 McCombs • El Paso, TX 79924

www.BellaEstanciasApts.com

bella@integrityamc.com

1 & 2 bedroom

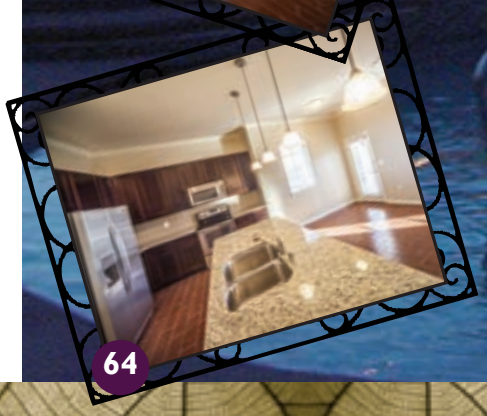
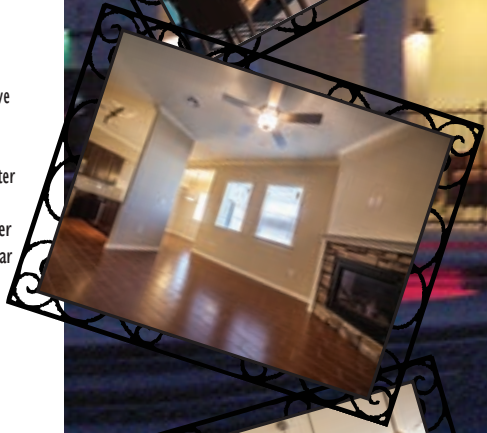
Luxury apartments

**Home of the 3 bedroom,
1450 sf townhome with
2 car attached garage**

- Gated, Resident-focused Community
- Washer/Dryer in every unit
- Sleek Stainless Steel Appliances including: Side-by-Side Refrigerator with water and ice dispenser, microwave, and smooth surface top stove
- Luxurious Resort Style Pool
- Dramatic Granite Countertops
- 24-hour State of the Art Fitness Center
- Yoga Area
- Bark Park with Dog Washing Center
- Resident Social Lounge with Latte Bar
- Skyscraping 10' Ceilings
- Walk-in closets
- Refrigerated Air
- Wood inspired Custom Tile Floor
- Subway Tile Backsplashes
- Fiber Optic wiring for Improved Computer/TV viewing
- Playground
- Beautifully Landscaped Courtyards
- BBQ grills in Courtyards

Starting at \$812

Driving Directions: Take Interstate 10 or 375 to Patriot Freeway (highway 54), turn right at the Sean Haggerty exit, make a right on McCombs and you will see this new construction on the left.



Live Beautifully

Office Hours

Monday - Friday 10:00 a.m. to 6:00 p.m.

Saturday - Call for Appointment

Sunday - Closed



Northeast

**New
Cardio
Fitness
Center**



like us on
facebook 

Spectacular Views



HIGH VISTA



APARTMENTS

844.904.6517

5041 Alabama | El Paso, TX 79930

www.highvista-apartments.com

highvista@integrityamc.com

Welcome HOME

- NEW STATE OF THE ART FITNESS CENTER
- Variable Lease Terms
- Closets of Epic Proportions
- Lighted Tennis Court
- Clothes Care Centers
- Washer/Dryer Connections Available
- Covered Parking Available
- 2 Refreshing Outdoor Pools
- Private Verandas Showcasing El Paso's Acclaimed City Views

Prices starting at \$601

1BR/1BA	725sq.ft.
1BR/1BA w/Den	825sq.ft.
2BR/2BA w/Den	1050sq.ft.
2BR/2BA Town Home	1260sq.ft.
3BR/2BA w/Den	1440sq.ft.

Driving Directions: From I-10 take the Patriot Highway to the Fred Wilson exit, continue on Fred Wilson to Alabama. At Alabama, continue to the left. We are on your right, across from William Beaumont Medical Center.



Office Hours

Monday - Friday 10:00 a.m. to 6:30 p.m.

Saturday 10:00 a.m. - 6:00 p.m.

Sunday Closed

Northeast

La Mirada

APARTMENT HOMES

915.600.6720

10550 McCombs • El Paso, TX 79924

www.lamiradaapts.com

lamirada@integrityamc.com

• **We Pay Gas, Electric**

- Newly Remodeled Units*
- Low Cost Cable Package
- Ceramic Tile Floors*
- BBQ Grills
- Multi-Purpose Event Center
- Large Laundry Room
- 4 Playgrounds
- Picnic Tables Throughout
- Large Courtyards
- Se Habla Español
- YISD
- Gas Cooking

*In Select Units

Prices Starting At \$673

including utilities:

1BR/1BA	612sq.ft.
2BR/1BA	760sq.ft.
3BR/1.5BA	870sq.ft.
4BR/1.5BA	1012sq.ft.

Driving Directions: Take I-10 to Patriot Freeway, turn right onto Sean Haggerty, right onto McCombs then we'll be on the left next to the Circle K.



Office Hours

Monday - Friday 10:00 a.m. to 6:00 p.m.

Saturday - Call for Appointment

Sunday - Closed





Ask about
our **GREAT**
specials

Northeast



**PETS
WELCOME!!**

BREED RESTRICTIONS APPLY



PINE VILLAGE
APARTMENTS

855.982.1124

5020 Fairbanks • El Paso, TX 79924

**RV STORAGE
AND OUTSIDE
STORAGES
AVAILABLE!**





like us on
facebook 

www.pinevillageapts.com
pinevillage@integrityamc.com



MOVE IN TODAY

ASK ABOUT OUR SPECIAL!

- Energy Efficient Apartments
- Outside/RV Storage Available
- Faux Wood Flooring
- Breakfast Bars
- Gas Stoves
- Evaporative Cooling
- Professional, Caring Management
- Sun Metro Route
- Clean Laundry Facilities
- Vaulted Ceilings Available
- Playground
- 24 hour Emergency Maintenance
- Se Habla Español

Prices Starting At \$525

- 1BR/1BA
- 2BR/1BA
- 2BR/2BA
- 3BR/2BA

Driving Directions

Take Interstate 10 to Patriot Freeway (Hwy. 54), exit Transmountain (Loop 375). Turn Right. Make the turnaround on Rushing. Turn right on Girl Scout. We are at Fairbanks and Rushing.



Office Hours

Monday - Friday 10:00 a.m. to 6:00 p.m.
Saturday - Call for Appointment
Sunday - Closed

Northeast

The Reserve
at
Sandstone Ranch
STAY IN YOUR HOME

855.982.1105

11200 Sean Haggerty Drive • El Paso, TX 79934

thereserve@integrityamc.com

www.thereserveatsandstoneranch.com

- Contemporary Living
- Kitchen Islands
- Vivid Granite Countertops
- Sleek Cabinetry
- Crown Molding
- Modern Stainless Steel or Black Enamel Appliances
- Double/Single Attached/Detached Garages
- Secluded Resort- Style Living
- Lush, Mature Green Landscape
- Serene Mountain Views
- Business Center w/ WiFi
- 24 Hour Fitness/Health Center
- Playground
- Social Lounge with Latte Bar
- Outdoor fireplace
- Pet Bark Park
- Tanning Deck and Cabanas
- Sand Volleyball Court
- Professional On- site Management
- Electronic Payments Accepted
- Full Size Washer and Dryer
- Gated Community
- "The Cave" Outdoor Entertainment
- Covered parking spaces available

Pricing begins at \$775

Driving Directions: Take US 54 North, exit Sean Haggerty and turn left onto Sean Haggerty. Proceed East, we will be on your right.



Office Hours

Monday - Friday 10:00 a.m. to 6:30 p.m.

Saturday 10:00 a.m. - 6:00 p.m.

Sunday 1:00 p.m. - 6:00 p.m.



ENJOY THE CAVE - COVERED OUTDOOR LIVING



Northeast



Right Place

**Ask
About Our
Special!**

TRAILS AT RANCHO VISTA

915.228.2127

5249 Wren | El Paso, TX 79924

www.thetrailsatranchovista.com

thetrails@integrityamc.com

- Refrigerated Air
- 2 Playground Areas
- Basketball courts
- Large 24 Hour Laundry Facility
- Clubroom w/ free WI-FI
- Sparkling Lap Sized Pool
- Cardio/ Fitness Center
- BBQ Areas
- Open Courtyards
- **CABLE INCLUDED!**
(70 channels w/ Time Warner Cable)
- * Newly Remodeled Apartment Homes
- Dishwashers in Every Unit
- *Breakfast Bars
- Large Walk In Closets
- Remodeled Bathrooms
- King Size Master Bedrooms
- Professional Office Staff
- 24 Hour Emergency Maintenance
- Se habla Espanol

Prices Starting At \$535

1 BR/1BA	600sq.ft.
2 BR/1BA	850sq.ft.
3 BR/2BA	1100sq.ft.

Driving Directions

From I-10, take Patriot Highway North. Exit onto Diana and proceed east to Dyer, turn left, proceed one block to Wren Avenue and turn right. We're one block down to the left.



Office Hours

Monday - Friday 10:00 a.m. to 6:30 p.m.
Saturday 10:00 a.m. - 6:00 p.m.
Sunday Closed

*In select units

Right Price

75

UTEP/Medical Center



**CALL
FOR
SPECIAL**



**Utility
Package
Available**



GREAT CUSTOMER SERVICE

Sedona Peak APARTMENTS

KERN AREA

855.524.0797

1901 Brown St. • El Paso, TX 79902

www.sedonapeak.com

sedonapeak@integrityamc.com

- 1 & 2 Bedroom Floor Plans
- Electric Included
- Basic Cable Included
- Sparkling Pool
- Panoramic Views
- Assigned Parking
- Gourmet Gas Cooking
- Evaporative Cooling
- Pet Approved Living
- Clothes Care Center
- Full Appliance Package
- 24 Courteous Maintenance Staff
- Knowledgeable & Friendly Office Staff
- Outdoor Storage Closet
- 3 Interior Closets On Top of Bedroom Closets!



Prices Starting at \$615

1BD/1BA 588sq.ft.

2BD/1BA 751sq.ft.

Driving Directions

From I-10 take exit 20 towards Cotton St. stay straight, follow E. Missouri/Gateway West Blvd continue to follow E. Missouri. Turn right on Brown St. . Straight up the hill, end at 1901 Brown.

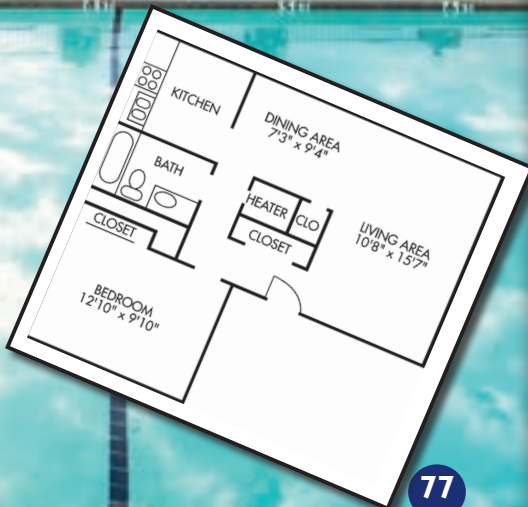


Office Hours

Monday - Friday 10:00 a.m. to 6:00 p.m.

Saturday - Call for Appointment

Sunday - Closed



77



Bella Estancias

*Love where you
Live*

SEE PAGE 64

Montecillo Communities



HOURS

Monday - Friday 10:00 a.m. to 6:30 p.m.
Saturday 10:00 a.m. - 6:00 p.m.
Sunday 1:00 p.m. - 6:00 p.m.



As El Paso's most innovative community development project, Montecillo is quickly changing the City's urban landscape and displaying a cutting-edge course for El Pasoans.

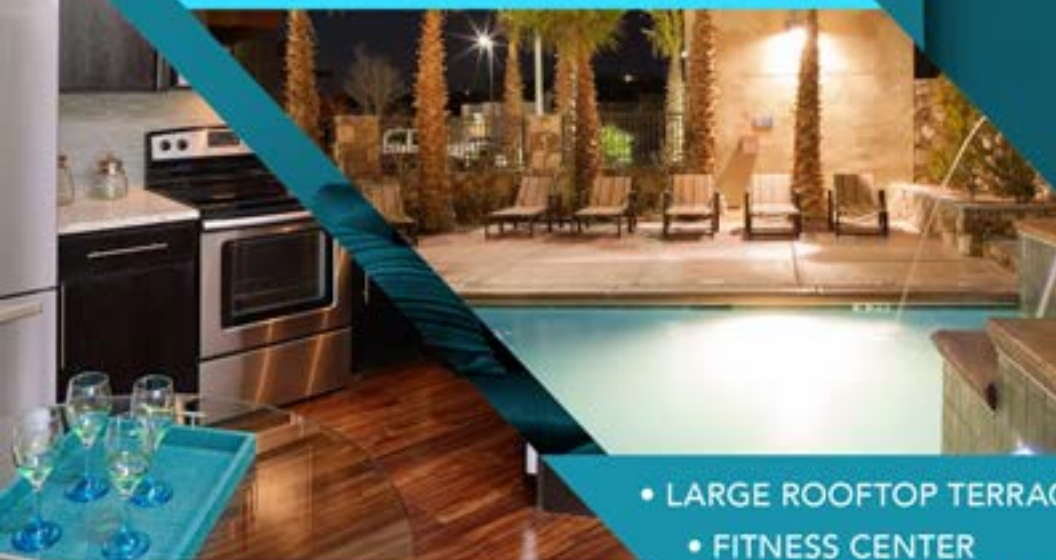
The concept behind Montecillo is simple: combine quality homes with walkable, energetic outdoor spaces where people can come to play, shop, eat and totally enjoy!

Montecillo offers you the chance to forge a connection with your community that will revitalize not only your spirit, but the spirit of El Paso.



UNIQUE CONTEMPORARY LIFESTYLE

COME SEE!



- LARGE ROOFTOP TERRACE
- FITNESS CENTER
- RESORT STYLE INFINITY POOL
- LARGE PRIVATE PATIO
- STAINLESS STEEL APPLIANCES
- WASHER AND DRYER

SANTI
D W E L L I N G S

150 W CASTELLANO

HOURS: FRI-WED 10AM-6:30PM

THUR 10AM-7:30PM

SANTI@MONTECILLO.COM

TOLL FREE 855-982-1109

Y
E

Montecillo



INTEGRITY
ASSET MANAGEMENT

SPACES / THEATRE

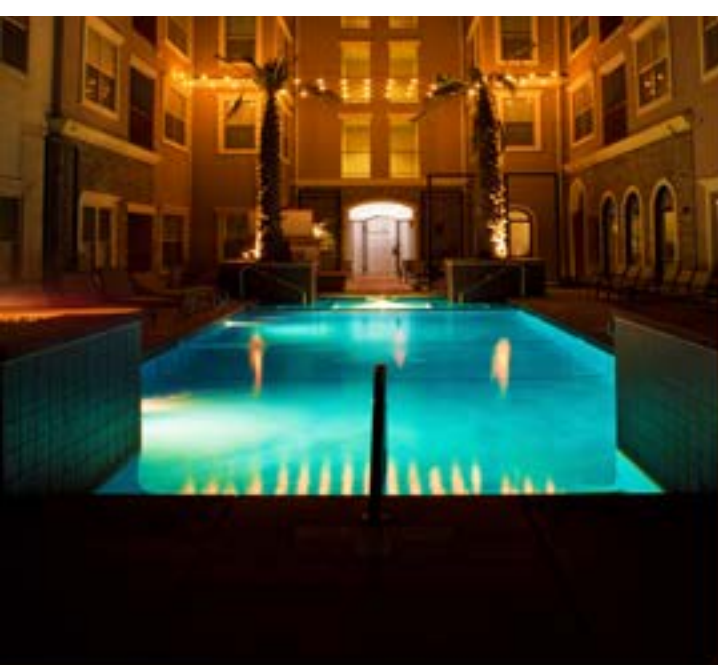
COMMUNITY POOL

BALCONIES

STAINLESS STEEL APPLIANCES W/ GRANITE TOPS

WASHER DRYER IN EVERY UNIT





5001 N. Mesa
Hours:
Fri-Wed 10am-6:30pm
Thursday 10am-7:30pm
thevenueatmontecillo.com
Toll free 855-483-3742





THE
V
E
N
U
E
OF
M
O
N
T
E
C
I
L
L
O

Montecillo

Features & amenities



Spacious 1 & 2 Bedroom
Award-Winning Designer Floor Plans
Washer and Dryer in Every Apartment
Skyscraping 9' and 12' Ceilings
Crown Molding
AT&T UVerse Wired
Garden Tubs in Master Bedrooms
Celling Fans
Black Appliances / Granite Countertops
Smooth Surface Range Tops
Ample 42" Custom Cabinets
Pantry
Refrigerators w/ Ice-Makers
Garbage Disposals
Clubroom / Business Center
2 Pools / 2 Spas
Outdoor Kitchen w/ Grills
Balconies*
Large Walk-in Closets*



- 24-Hour, State of the Art Fitness Center
- Resistance Lap Pool
- "The Cave" Outdoor Entertainment
- Outdoor kitchen, grills and fireplace
- Pet Park
- Elevators and Controlled Access
- Clubhouse/Movie Theatre/Billiards Room
- Six spacious floorplans with beautiful views
- Upgraded kitchens with granite countertops
- Bocce anyone?





The View
AT MONTECILLO

*A New Point of View
with a Focus on You*

The View at Montecillo, a community designed for the lifestyle you deserve. Sophisticated amenities, attention to detail and social opportunities abound to ensure that your new apartment home is everything but an empty nest.

*A move to The View will create
a brand new you.*

Sophisticated Adult Living 55+



Montecillo

140 W. Castellano
theview@montecillo.com
theviewatmontecillo.com

Toll free 1-844-310-9767

West

Great Size Private Backyards/Patios Duplexes and Townhomes

Coronado Villas



855.502.6115

6115 Escondido Drive • El Paso, TX 79912

www.thecoronadovillas.com

Follow the blue signs

Rates start at \$959.00

Office Hours

Monday - Friday 10:00 a.m. to 6:00 p.m.

Saturday by appointment only



- Spacious 2 & 3 bedroom homes
- Washer / Dryer Connections*
- Washer / Dryer Stackable Machines*
- Lush, manicured landscaping
- Covered Parking*
- Scenic Mountain Views
- Private Carports / Garages *
- Refrigerated Air Conditioning
- Residential Neighborhood

*in select units

86

West

Foxglove

915.584.3453

210 West Redd Road • El Paso, TX 79932

foxglove@integrityamc.com



- Easy access to Interstate 10
- 1 and 2 Bedrooms
- Cable and Internet Included
- Business Center
- Patios/Balconies
- Washer and Dryer Connections
- Pool with Hot Tub
- 24 Hour Emergency Maintenance
- Pet Friendly
- Laundry Facility
- Wood Flooring
- Storage
- Beautiful Mountain Views
- Vaulted Ceilings
- Under New Management and Ownership

Prices Starting At \$625

Driving Directions: Take Redd Road exit off of I-10; go west; past Doniphan Road, continue and the property will be on your right.



Office Hours

Monday - Friday 10:00 a.m. to 6:00 p.m.
Saturday by appointment only

SIT BACK, RELAX AND ENJOY LIVING!

Pine Valley Estates

855.982.0939

415 W. Redd Road • El Paso, TX 79932

www.pinevalleyest.com

pinevalley@integrityamc.com

- Easy access to Interstate 10
- Cable Included
- Stackable Washer/Dryer Connections
- Fireplaces
- Enclosed Rock Wall Patios
- Storage Rooms
- Ceiling Fans
- Swimming Pool
- Spacious Closets
- Large Floorplans
- Beautiful Landscaping and Mountain Views
- Duplex Community
- Friendly, Professional Staff
- 24 Hour Emergency Maintenance
- Se Habla Español

Prices Starting At \$630*

1BR/1BA 770sq.ft.

2BR/1BA 1035sq.ft.

2BR/2BA 1055sq.ft.

Driving Directions: From I-10 East exit Redd Road. Go left under the overpass. Continue on Redd Road thru Doniphan Intersection. We will be on your right. From I-10 West exit Redd Road. Go right. Continue on Redd Road thru Doniphan Intersection. We will be on your right.



Office Hours

Monday - Friday 10:00 a.m. to 6:00 p.m.

Saturday by appointment only

Sunday - closed

* Subject to change



West

Experience Downtown Living...Uptown!



Vista Ventana

844.874.4874

5500 Confetti • El Paso, TX 79912

www.vistaventanaapts.com

vistaventana@integrityame.com

- Refrigerated Air Conditioning
- Gas Cooking
- Ceiling Fans
- Swimming Pool
- Breakfast Bar
- Emergency 24-Hour Maintenance
- Spacious Closets
- Clothes Care Center
- Paramount Views
- Panoramic Picture Windows
- EPISD

Prices Starting at \$530

1BR/1BA 600sq.ft.

2BR/1BA 696sq.ft.

Driving Directions: Take I-10 to Executive Blvd., go to Mesa. Turn left on Mesa heading west to Festival. Turn left on Festival then right on Confetti. We're on your right.



Office Hours

Monday - Friday 10:00 a.m. to 6:00 p.m.

Saturday by appointment only

Sunday - closed



Close to UTEP,
entertainment,
dining and much
more!!



West Live it! Love it! Get it!

Basic Cable
Offered.
Utilities
Allocated/Submetered
Pay On Site



**Pets
Welcome**

Call for Huge Savings!

*Great Neighbors;
Great Living!*



CASA BARRANCA

866.590.5168

151 South Resler • El Paso, TX 79912

www.casabarrancaapts.com

casabarranca@integrityamc.com

- Spacious Apartments
- Three Convenient Laundry Facilities
- 24-hour Emergency Maintenance
- Swimming Pool Open Year 'Round
- LOCATION, LOCATION, LOCATION
- Utility Activation Included
- State of the Art Playground
- Enclosed Patios
- Se Habla Español
- Spacious Balconies
- Pet Friendly
- Basketball Court
- ALL HOUSING PROGRAMS WELCOME
- Clubhouse/Gameroom
- Close to UTEP, entertainment, dining and much more.

Starting at \$610

1BR/1BA 570 sq.ft.	3BR/2BA 1039 sq.ft.
2BR/1BA 767 sq.ft.	3BR/3BA Townhome
2BR/1.5BA 779 sq.ft.	1163 sq.ft.
2BR/2BA 845 sq.ft.	

**Prices & Availability Subject to Change

Driving Directions

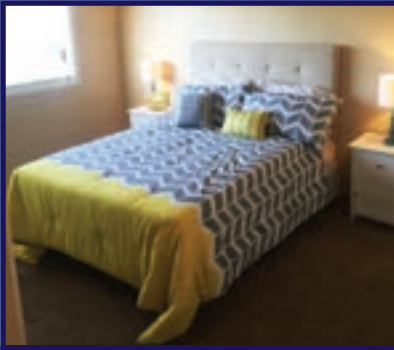
From I-10 West Exit 12 to merge onto S Resler Dr. Make a U-turn at Pitt Street. Casa Barranca will be on the right.



Office Hours

Monday - Friday 10:00 a.m. to 6:30 p.m.
Saturday 10:00 a.m. to 6:00 p.m.
Sunday - closed

West



All Housing

Call for Specials

Huge Floorplans
That Will
Surprise You

COLORES
DEL SOL
APARTMENT HOMES

877.532.6031

7133 North Mesa • El Paso, TX 79912

www.ColoresDelSolApartments.com

coloresdelsol@integrityamc.com



- Lap-size Pool with Sundeck
- Tennis Court
- Two 24-Hr Laundry Facilities
- Enclosed Playground
- 24-Hr Emergency Maintenance
- 9 Amazing Floorplans
- Gas Heating Appliances
- Refrigerated Air Conditioning
- Patio/Balcony
- Se Habla Español

Newly Renovated Apartments Great Customer Service

Pricing Starting At \$599

1br/1ba	670sqft
1br/1.5ba	690sqft
1br/1.5ba	800sqft
2br/1.5ba	930sqft
2br/2ba	940sqft
2br/1.5ba	1000sqft
3br/1.5ba	1100sqft
3br/3ba	1250sqft
4br/3ba	1600sqft

**Prices & Availability Subject to Change

Directions to Community:

From I-10 Westbound, Take exit 11 and turn right on Mesa Street. Colores Del Sol will be on the right.



Office Hours

Monday - Friday 10:00 a.m. to 6:30 p.m.

Saturday 10:00 a.m. to 6:00 p.m.

Sunday - closed

Programs welcome

93



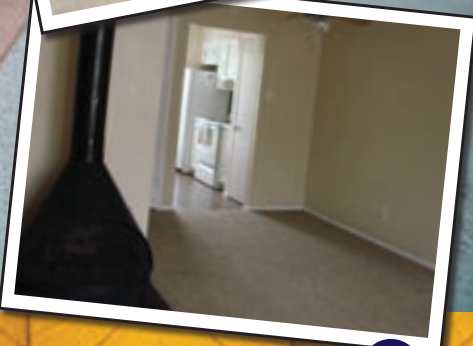
West

**Come
see our
townhomes
& three
bedroom
homes**

2 Bedroom Floorplan



BE SURPRISED!!!



COPPER COMMONS

APARTMENT LIVING

844.462.9302

272 Shadow Mountain • El Paso, TX 79912

www.coppercommons.com

coppercommons@integrityamc.com

- Refrigerated Air Conditioning
- Inviting Swimming Pool open year 'round
- Emergency 24-Hour Maintenance
- Pet Friendly
- Large Closets
- Clothes Care Center
- Se Habla Español
- Beautiful Clubhouse
- Private Patio/Porch
- Playground
- Fireplaces*
*in upstairs units
- Online Payments

Prices Starting at \$595

1BR/1BA	750 sq ft
2BR/1BA	950 sq ft
2BR/1.5BA Townhomes	1,050 sq ft
3BR/2BA	1,200 sq ft
3BR/2BA cottage	

Driving Directions

From I-10 West Exit Sunland Park. Drive proceeding east. Cross Mesa and proceed three blocks east on Shadow Mountain. We're to your right.



Office Hours

Monday - Friday 10:00 a.m. to 6:00 p.m.
Saturday by appointment only
Sunday - closed

West



855.982.0890

6938 Alto Rey • El Paso, TX 79912

www.theparkridgeapts.com

parkridge@integrityamc.com

**Ask
about our
Great
Specials**

Driving Directions

Take I-10 West to Resler exit. Travel on Resler 1/4 mile across Mesa to 2nd light, turn right on Alto Rey. We're about 2 blocks up on the left.



Prices start at \$565

1BR/1BA 640sq.ft.
2BR/1BA 840sq.ft.
2BR/1BA 879sq.ft.
2BR/1.5BA 922sq.ft.
3BR/2BA 1029sq.ft.

Office Hours

Monday - Friday 10:00 a.m. to 6:00 p.m.
Saturday by appointment only
Sunday - closed





- Evaporative Cooling
- Gas Heating/Appliances
- Basketball Court
- Large Swimming Pool
- Clubhouse/Gameroom
- Playground
- Sand Volleyball Court
- BBQ Areas
- 4 Laundry Facilities
- Emergency 24-Hour Maintenance
- Se Habla Español
- Section 8 Welcomed



Plan your
party here...
in **YOUR**
Clubroom!!!!

West

Customize
your own
rates.

SUMMER BLAZING
DEALS!!!!



Best rates on El Paso's Westside



SANTA FE PLACE

915.301.8291

350 North Festival • El Paso, TX 79912

www.SantaFePlaceElPaso.com

- Two Saltwater Pools
- Spa
- Picnic Areas
- BBQ Grills
- New Fitness Center
- Under New Management and Ownership
- Pet Friendly
- Sundeck
- Business Center
- Card Operated Laundry
- Cable and Internet included
- Ceiling Fans
- Storage Units
- Fireplace
- Patio/Balcony
- Walk-in Closets
- Cable and Internet included
- Great Location
- Gorgeous Mountain Views

**One & Two Bedrooms
Starting At \$610**



Office Hours

Monday - Friday 10 a.m. to 6:30 p.m.

Saturday 10:00 a.m. to 6:00 p.m.

Sunday 1:00 p.m. to 6:00 p.m.

West

Come See for Yourself

Enjoy
one of
our Huge
Townhomes

Spacious
Floor
Plans

Law-Dropping
Landscaping

IRS benefits you... Integrity Rent Savings

GREAT Service... GREAT Residents!

SEVILLE WEST APARTMENTS

915.206.2840

200 Shadow Mtn. • El Paso, TX 79912

www.SevilleWestApartments.com

sevillewest@integrityamc.com

- Newly Remodeled Apt. Homes
- Spacious 1,2 & 3 Bedrooms
- Refrigerated/Evaporative Cooling
- Sparkling Pool
- Covered Parking Available
- 2 Laundry Facilities
- Emergency 24-Hour Maintenance
- Convenient to I-10
- Picnic Area with Grills
- Individual Patios*
- Lush, Resort Landscaping

Prices Starting At \$605

1BR/1BA	800sq.ft.
2BR/1BA flat	1000sq.ft.
2BR/1.5BA townhome	1200sq.ft.
3BR/2BA	1320sq.ft.

Driving Directions

Exit Sunland Park off of Interstate 10.
Proceed east and cross Mesa Street. Watch for
us on the right.



Office Hours

Monday - Friday 10:00 a.m. to 6:00 p.m.
Saturday by Appointment Only
Sunday - closed

West

REFRIGERATED AIR

THE HILLS AT NORTH MESA

915.206.5684

4848 N. Mesa • El Paso, TX 79912

www.thehillsatnorthmesa.com

thehills@integrityamc.com

- Charming Playground with convenient seating
- Great Living Spaces
- Cable Included
- Apparel Care Center
- Personal Exterior Storage
- Private Patios and Balconies for Every Floorplan
- Se Habla Español
- Refrigerated Air
- Pets welcome

Prices Starting at 586

1BR/1BA	800sq.ft.
2BR/1BA	925sq.ft.
3BR/2BA	1240sq.ft.

Driving Directions: From I-10, take Executive Center to Mesa. Turn left on Mesa and proceed 4 blocks. We are located between Castellano and Argonaut.



Office Hours

Monday - Friday 10:00 a.m. to 6:30 p.m.
Saturday 10:00 a.m. to 6:00 p.m.
Sunday - closed



Huge Floorplans - MOVE IN TODAY

**Amazing
Specials
Call for
Details**



GREAT Customer Service



MONTECILLO.COM

TI:ME
SURA YOGA
GUFO DI MILANO
CANTINA MALOLAM
AQTIV CHIROPRACTIC
SOSPITAS INSURANCE
INDEPENDENT BURGER
STONEWOOD MODERN GRILL
HILLSIDE COFFEE & DONUTS



Montecillo



LIVE SMARTER,
NOT HARDER

Welcome to our Heroes at Fort Bliss

To the heroic service members and their families who proudly serve our nation at Ft. Bliss, we want to say thank you for the sacrifices you endure in the preservation of freedom and democracy. We know that moving can be a traumatic event and we want to make it a little bit easier for you. All of the communities featured in RentNow are committed to making your moving experience a pleasant process.

When you apply and are approved to live at any of the 52 RentNow featured communities, your application fee will be credited towards your first month's rent payment. This is just a small way that we can ease the financial burden of relocating.

Additionally, the communities featured on page 3 are offering an additional **\$100 off the first month's rent and ½ off the security deposit** amount for active duty service members. A current Military ID must be presented.

We look forward to you visiting our culturally diverse communities and have your new "home away from home" waiting for you!

Certain restrictions apply - must present RentNow ad for credit

UNDERSTANDING DIFFERENCES AND MAKING CHANGES



Integrity Asset Management understands that not everyone's living needs are the same. Whether we manage the community that best meets your needs or whether we need to refer you elsewhere, we are committed to assisting with your new home search.

The following Integrity managed communities offer Type A or Type B accessible units:

Dos Santos Apartments (page 16)

The Quest (page 36)

La Mirada Apartments (page 68)

The Reserve at Sandstone Ranch (page 72)

The Venue at Montecillo (page 82)

Summerstone Apartments (page 32)

Southview (page 54)

Bella Estancias (page 64)

The Santi (page 80)

The View (page 84)

All Integrity Asset Management communities are committed to reasonably accommodating a request for modification by a person living with disabilities.

Please call **1-866-265-3368** for more information on existing and future available units.

*Just one of the multi-family management groups
committed to meeting housing needs of El Pasoans.*

Experience the Difference



SAN
MATEO

See pages 26 & 27

How many bedrooms do you need? What amount do you have budgeted? Is there a preference as to area of town? Are you bringing a four-legged friend? When do you want to move? Do you have a deal breaker? Need washer and dryer connections? Would you like a fitness center, a playground? What about refrigerated air? We even work with communities that offer a 2nd Chance to someone who has had a leasing problem in the past. Ask HOW!!

No charge of any kind to help you find the perfect home...

ONE SIMPLE CALL . . . THAT'S ALL IT TAKES!

772-5168



*Love
where you
Live!*

